



Inaugural Lecture Program
Kathmandu University
Nepal
23rd Jul 2024

Bhupal Govinda Shrestha, PhD
Professor
Dept of Biotechnology
Kathmandu University

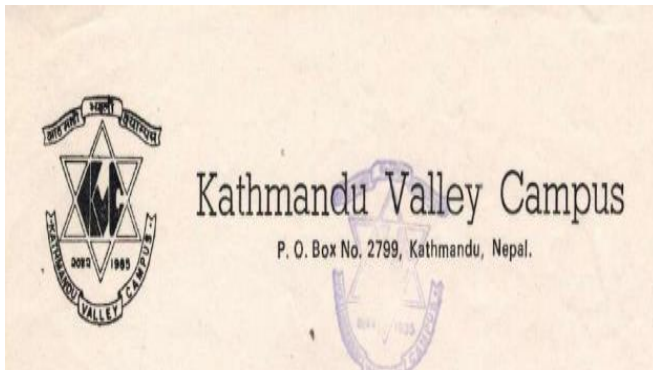
Biography



Born – 2nd Sept 1972



SLC



I Sc.



B Tech (Food)



MSc, PhD, Res Assc



Post Doc



Post Doc



Res Training



Res Training



Visiting Scientist

- **KU Service**



- **Assistant Prof (Feb '09-May'18)**

Kathmandu Univ, Nepal

- **Associate Prof (May'18 – Jul 2024)**

Kathmandu Univ, Nepal

- **Professor (Jul 2024 – Present)**

Kathmandu Univ, Nepal

Grants

- 2011, 2020 (Renewal) IFS, Sweden
- 2012 Renewable Nepal, NORAD/KU
- 2014 NAST/ADB
- 2015 NARTC
- 2017 UGC Collaborative Research Grant
- 2018 TWAS
- 2022 NARTC/KOICA

Professional and academic service

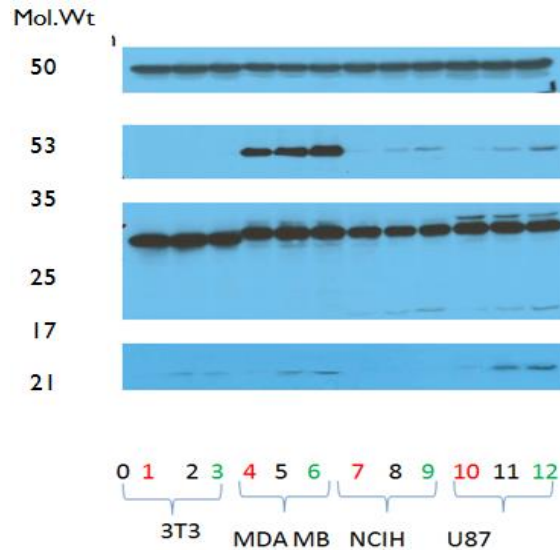
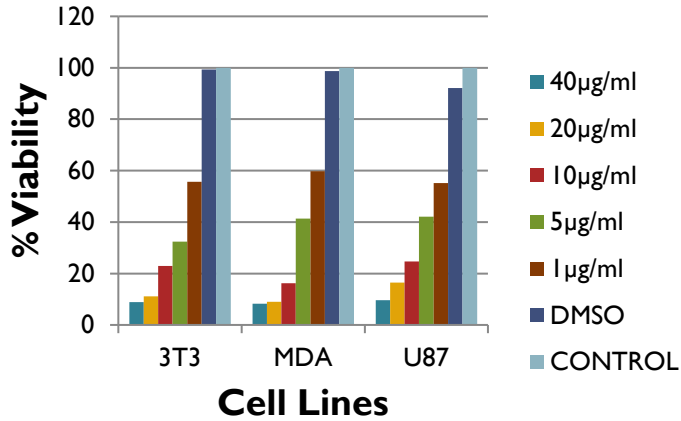
- Reviewer, Journal of Food Science and Technology, Nepal.
- Member, Editorial Board, Journal of Tropical Life Science
- Advisor, Nepal Journal of Biotechnology
- Life Member, NEFOSTA, BSN, NEMBIS, NBA
- Ex Comm Member, Nepal Univ Teachers Asscn(NUTA), 2012-2017

Invited speaker

- Nepal – Indo Natural Product Conference, Nepal, 2012
- ‘International Seminar on Natural Resource Utilization’ India, 2015
- ‘International Biotech Conf, Bhilai, India 2016
- South Asian Biotechnology Conference, Colombo, Sri Lanka, 2018
- Lecture at Academia Sinica, Taipei, Taiwan, 2019
- 1st Intl Conf on Synthetic Biology, Tianjin, China, 2023

Research

MTT assay *D deltoidea*



Bhupal Govinda Shrestha ✎

[Kathmandu University](#)

Verified email at ku.edu.np

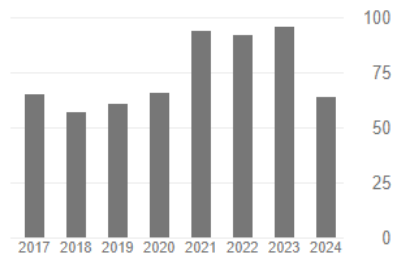
[Medicinal plants and Cancer](#) [Bioethanol](#)

FOLLOWING

Cited by

[VIEW ALL](#)

	All	Since 2019
Citations	868	476
h-index	11	9
i10-index	11	9



TITLE	CITED BY	YEAR
<input type="checkbox"/> Selective Killing of Cancer Cells by Leaf Extract of Ashwagandha: Identification of a Tumor Inhibitory Factor and The First Molecular Insights to its Effect <small>N Widodo, K Kaur, BG Shrestha, A Nagpal, Y Takagi, SC Kaul and R Wadhwa Clinical Cancer Res 13 (7), 2298-2306</small>	224	2007
<input type="checkbox"/> Selective killing of cancer cells by leaf extract of Ashwagandha: Components, activity and pathway analyses <small>SCKRW N Widodo, Y Takagi, BG Shrestha, Tetsuro Ishii Cancer Lett</small>	107	2008

Future Plan

- Bring in more Grants for Research
- Start new Program in Biotechnology Department
- Try to establish CoE Research Center in Medicinal Plants Research
- Give Special Guest Lectures in Renowned Univs, Research Centers
- Have publications worth more than 100 IF
- Help University increase its Global Ranking

Thank You